

View from Upper-street.

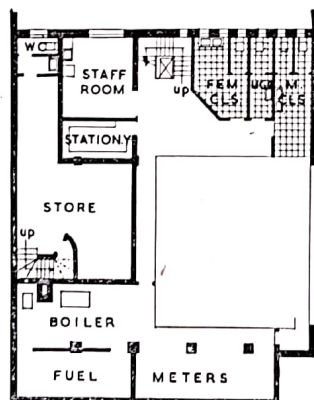
RIBA
LIBRARY**BANK PREMISES, 218/219, UPPER STREET, ISLINGTON, N1**

Architect and Assistant Architect to the Bank
B. C. SHERREN, FRIBA, & F. N. JAMES, ARIBA

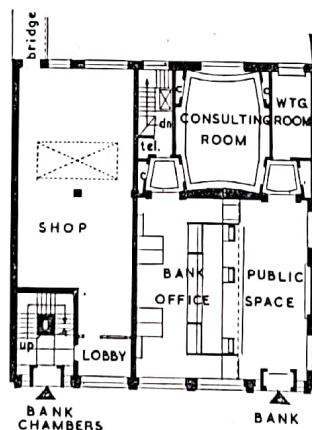
Assistant Architect-in-Charge
H. S. SMITH, ARIBA

Consulting Engineer
DOUGLAS S. YOUNG, MInstCE, MIMechE

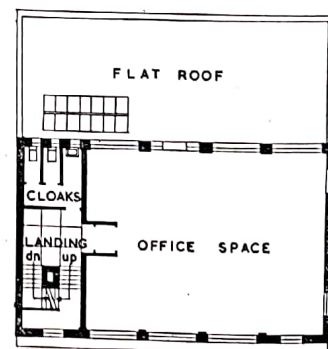
Builders
C. P. ROBERTS & CO., LTD.



BASEMENT



GROUND FLOOR



FIRST & SECOND FLOORS

Scale of Feet
 10 5 0 10 20 30

THESE premises have been erected on the site occupied by the former branch of the bank which was destroyed by enemy action. The basement and ground-floor are in reinforced concrete forming a monolithic construction. External flank walls were designed as retaining walls and a liquid water-proofer has been incorporated in the basement cement. First and second floors are of steel frame construction with external walls of load-bearing brickwork. The floors and roof are of a hollow tile fire-resisting construction, the soffit being lined with an insulating material.

Externally, the ground-floor elevation is in Devon grey granite with entrance, surrounds to bank and bank chambers in Nobresina marble, with teak window frames and entrance doors. Facing bricks to first and second floors are mixed Bedford Grey hand-made sandfaced facings.

The floor to the public space is of Nobresina marble slabs laid to a regular pattern with squares of red carborundum tiles at intervals, while in the bank office wood blocks are laid. The main wall panels are of figured ash veneer, with dado panels of figured walnut veneer. The ceiling is in three bays with moulded lighting trough cornice and egg crate type lighting panels. The artificial lighting consists of cold cathode tubes.

In a central position on the public space flank wall is a memorial tablet (recovered from the old building) mounted on a Nobresina marble slab surrounded by a dull silvered mirror.

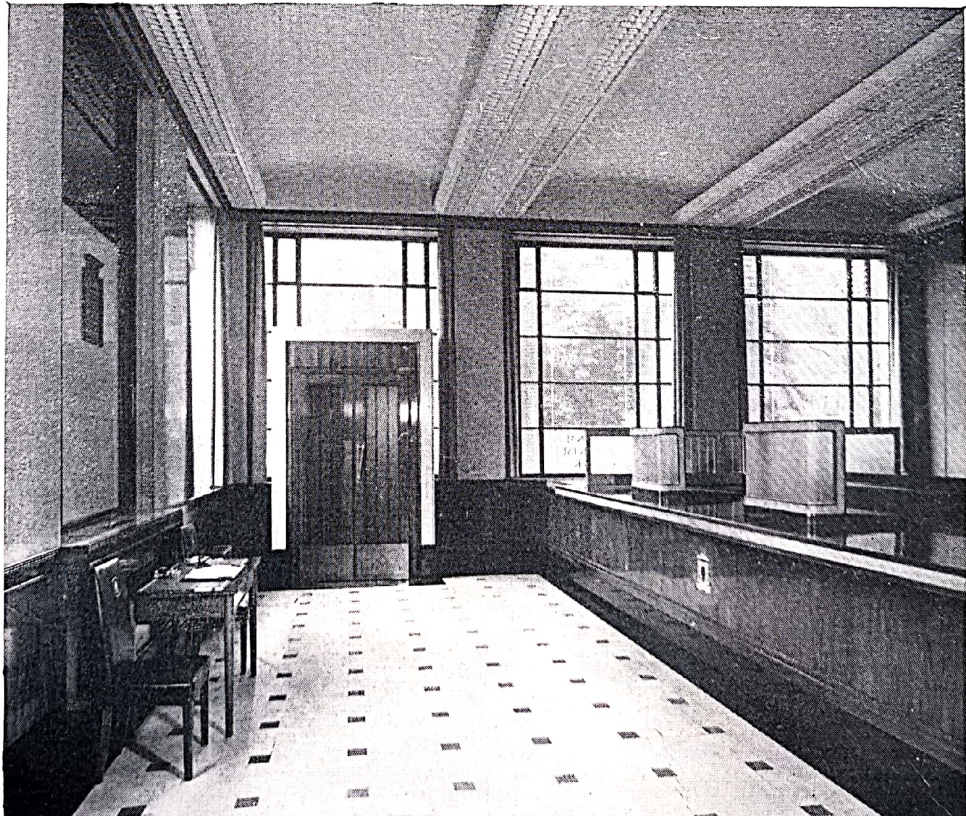
Consulting room and waiting room: Floor—wood blocks surround with carpet infilling. Walls—main panels: figured eucalyptus veneer. Frieze panel: blistered figured cherry veneer. Doors: flush panel walnut veneer. Ceiling—fibrous plaster with

fluted frieze and plain stepped surround. Following is a list of sub-contractors and suppliers:

Fibrous plaster, G. Jackson and Son, Ltd.; heating and hot-water services, Richard Crittall and Co., Ltd.; facing bricks, Proctor and Lavender, Ltd.; stonework, Bath and Portland Stone Firm, Ltd.; metal windows and lantern light, Luxfer, Ltd.; granite and marble work, Anselm Odling and Co.; sanitary fittings, John Bolding and Son, Ltd.; ironmongery, W. Cassey, Ltd.; metalwork, W. Pickford, Ltd., and F. L. Stone-Wootton; asphalt, Limmer and Trinidad Lake Asphalt Co., Ltd.; steelwork, Dorman Long and Co., Ltd.

Reinforced concrete, Helical Bar and Engineering Co., Ltd.; wood block flooring, Hollis Bros., Ltd.; electrical work, G. Buckingham, Ltd.; terrazzo, Art Pavements and Decorations, Ltd.; glazing and mirror, John Newton and Son, Ltd.; paints, I.C.I., Ltd.; lift, Geo. Johnson, Ltd.; strong-room door and night safe, Chubb and Son, Ltd.; bank fittings, C. P. Roberts and Co., Ltd.; furniture, C. W. Clarke and Son, Ltd.; light fittings (bank), Architect-designed, (general) Falk, Stadelman and Co., Ltd.; timber (solid), James Latham, Ltd., (veneer), Richard Graefe, Ltd.; drainage, Burn Bros., Ltd.

BANK PREMISES, 218/219, UPPER STREET, ISLINGTON, N1



Banking hall.